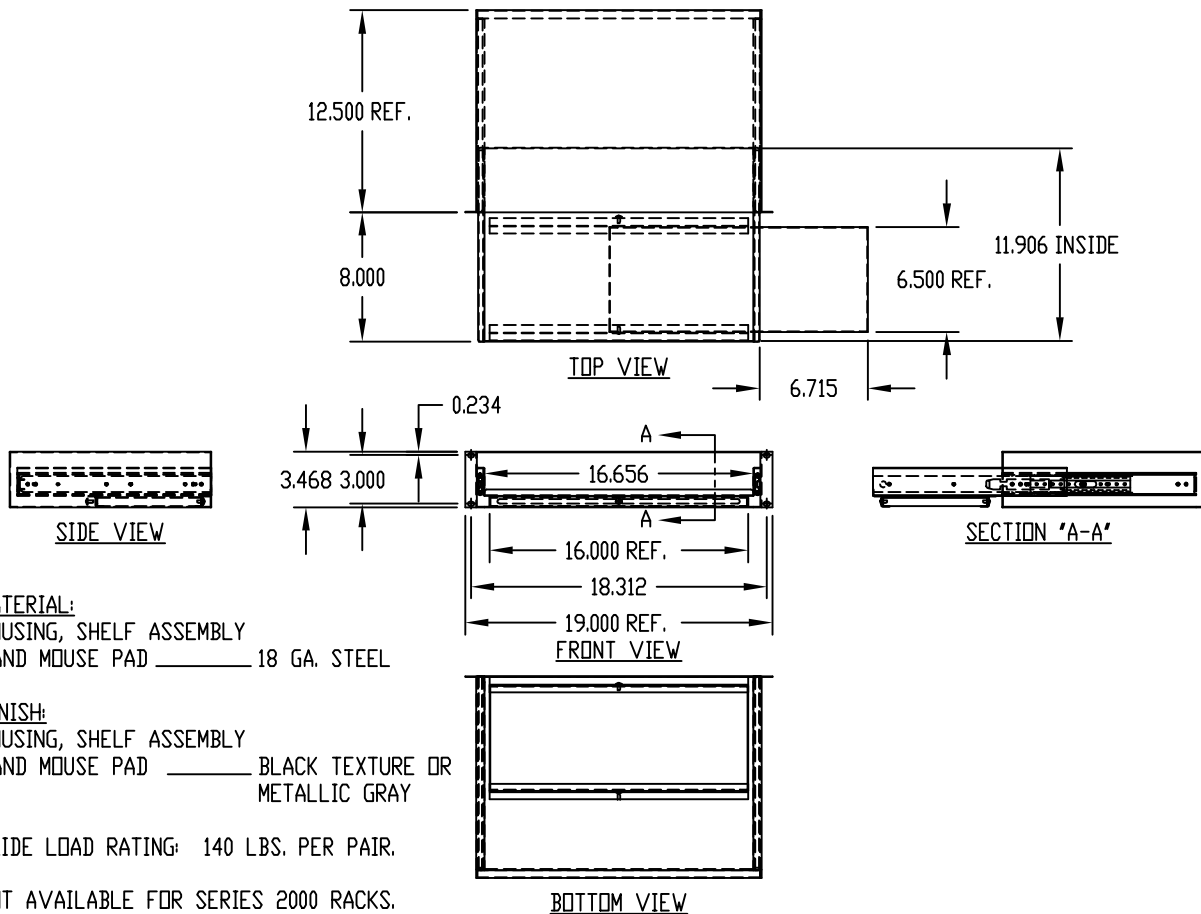


PART NAME

KEYBOARD SHELF ASSEMBLY - 19" P.S.

PART No.

KS-1785



MATERIAL:
HOUSING, SHELF ASSEMBLY
AND MOUSE PAD _____ 18 GA. STEEL

FINISH:
HOUSING, SHELF ASSEMBLY
AND MOUSE PAD _____ BLACK TEXTURE OR
METALLIC GRAY

SLIDE LOAD RATING: 140 LBS. PER PAIR.

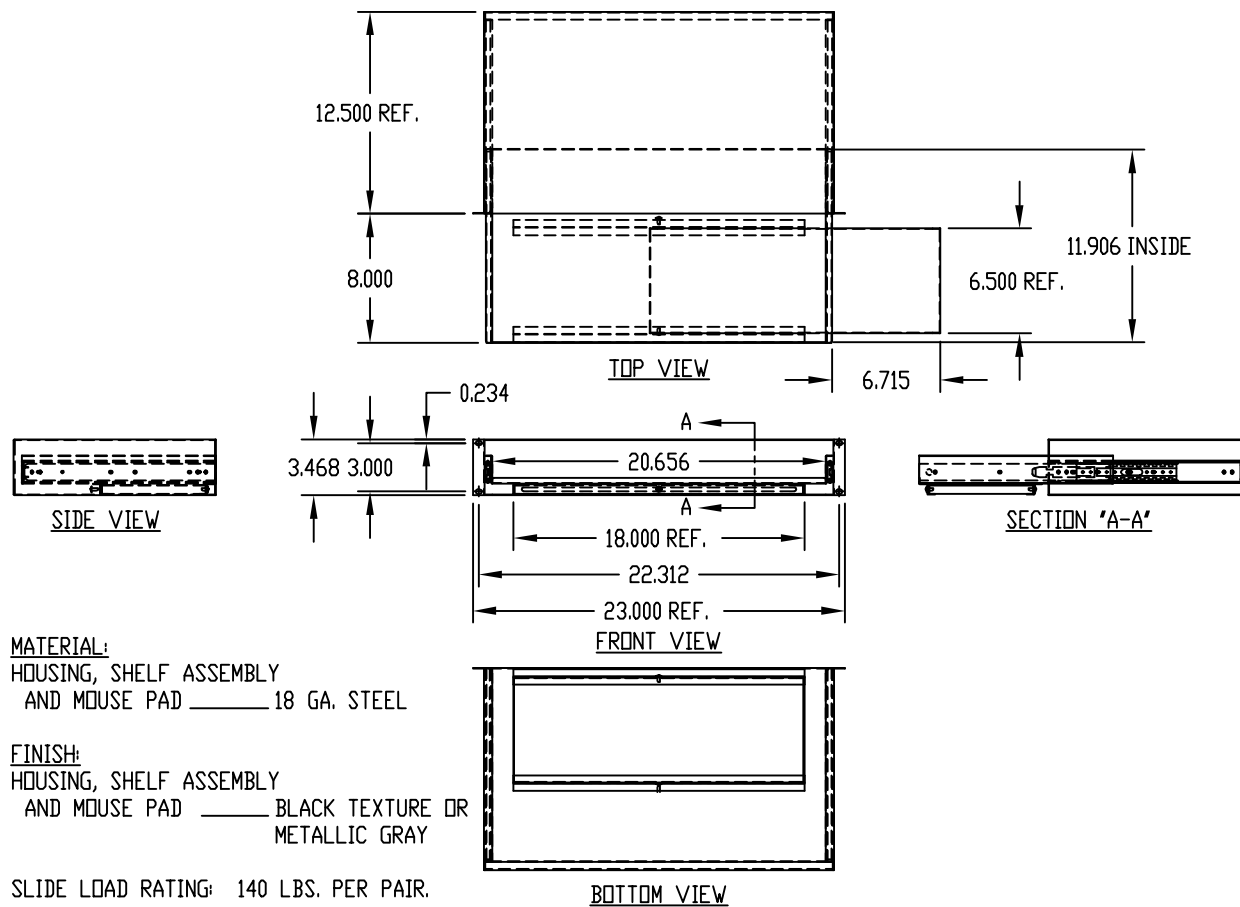
NOT AVAILABLE FOR SERIES 2000 RACKS.

PART NAME

KEYBOARD SHELF ASSEMBLY - 23" P.S.

PART No.

KS-1787



MATERIAL:
HOUSING, SHELF ASSEMBLY
AND MOUSE PAD _____ 18 GA. STEEL

FINISH:
HOUSING, SHELF ASSEMBLY
AND MOUSE PAD _____ BLACK TEXTURE OR
METALLIC GRAY

SLIDE LOAD RATING: 140 LBS. PER PAIR.